

## WELL SUPPLIES



### EBS Monitoring Well Plug

The EBS Monitoring Well Plug is used to cap monitoring wells. The plug can be locked to prevent tampering or accidental filling of the monitoring well. The monitoring well plug features a molded gasket, which expands as the top nut is tightened, insuring a watertight seal.

**257**

Model	Size	Height	Width	Weight (lbs.)	Price (\$US)	Shipping
25720	2"	2 1/4"	2 3/8"	0.3	\$14.50	<b>FREE</b>
25740	4"	2 7/8"	4 1/2"	0.5	\$16.50	<b>FREE</b>
25760	6"	3 3/4"	6 1/2"	2.0	\$45.00	<b>FREE</b>



### EBS Rain Tight Monitoring Well Boxes

The EBS Rain Tight Monitoring Well Manhole allows access to monitoring/observation wells. Monitoring well markings, which comply with API RP 1615, are cast into the cover. The manhole features a cast iron ring and cover with machine fitted Buna-N O-Ring for rain tight security, steel skirt, 3/8" flush mount stainless steel bolts for limited access and carries the H-20 load rating.

The 5" X 6" well box can be used for soil vapor wells, 1" piezometers or well points or injection wells.

**103**

Model	Size	Height	Width	Weight (lbs.)	Price (\$US)	Shipping
1035X6	5" X 6"	6"	6"	11.0	\$39.50	<b>FREE</b>
1038X75	8" x 7 1/2"	6 7/8"	9 7/8"	13.0	\$49.50	<b>FREE</b>
1038X12	8" x 12"	12 7/8"	9 7/8"	16.0	\$49.50	<b>FREE</b>
10312X12	12" x 12"	13"	13 3/4"	30.0	\$69.50	<b>FREE</b>

Pallets: 5" X 6" = 100 pieces per pallet; 8" x 7 1/2" = 100 pieces per pallet;  
 8" x 12" = 64 pieces per pallet; 12" x 12" = 36 pieces per pallet.

# WELL SUPPLIES



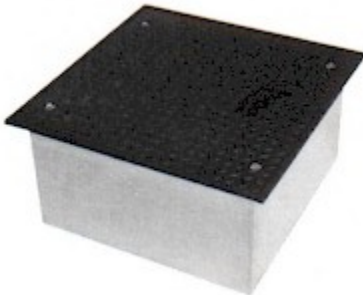
**107MW**

## EBS Large Monitoring Well Manhole

The EBS Large Monitoring Well Manhole is water tight and allows access to monitoring/observation wells. The manhole is large enough to accommodate most electronic probes, conduit and junction boxes, as well as some remedial equipment. The manhole features a steel ring, diamond plate steel cover with a monitoring well triangle designation in the center, galvanized steel skirt, 3/8" flush mount stainless steel bolts for limited access and carries the H-20 load rating. Model 107MW is a rain tight limited access monitoring well manhole, which includes a Buna-N gasket.

Model	Size	Height	Width	Weight (lbs.)	Price	Shipping
107MW18X12	18"x12"	12 3/4"	19 1/8"	48.0	\$173.08	<b>FREE</b>

Pallets: 18" x 12" = 20 pieces per pallet.



**105WT**

## EBS Heavy Duty Square/Rectangular Manhole

Useful for remediation systems, the EBS Heavy Duty Square/Rectangular Manhole features a 3/8" diamond plate steel cover with rust resistant coating, 16 gauge galvanized steel skirt with welded overlapping comers for added strength and carries the H-20 load rating. The EBS Model 105WT is also a rain tight manhole, which includes a Buna-N gasket. Other sizes from 12" X 12" up to 48" X 48" are available, please call EBS toll free at (866) H2O-AIR1.

Model	Size	Height	Length	Width	Weight (lbs.)	Price (\$US)	Shipping
10524X24	24"x24"x10"	10"	24¼"	24¼"	80.0	\$275.00	<b>FREE</b>

Pallets: 24"x24"x10" = 12 pieces per pallet.

## WELL SUPPLIES



### Square Locking Well Protector

The Square Locking Well Protector is installed over a water/monitoring well which rises aboveground. The well protector is 5 feet long to allow for secure anchoring into the surface surrounding the well. The protector features all steel construction with a rust resistant coating and a lockable hinged access door. Custom lengths are also available upon request.

**76**

Model	Size	Height	Width	Weight (lbs.)	Price (\$US)	Shipping
765X4	4"	5'	4"	24	\$75.00	<b>Free</b>
765X6	6"	5'	6"	39	\$99.50	<b>Free</b>
765X8	8"	5'	8"	54	\$225.00	<b>Free</b>

### EBS 5035SC™ Soil Sampler

The 5035SC™ Samplers are used to reduce volatilization of VOCs and SVOCs. The 5035SC™ Sampler is designed to meet the requirements for the EPA 5035 method. It is approved by the RWQCB Region 1 for hydrocarbon sampling and transportation (using dry ice) and by the EPA and DTSC for sampling and field preservation (using sodium bisulfite or methanol). 5035SC™ Samplers cost \$199 for a bag of 50 with a free PVC handle and free overnight shipping. Each 5035SC™ Sampler comes with a hermetically sealed inert plastic bag with laboratory label attached



The 5035SC™ Sampler collecting a soil sample.

- Environmental Bio-Systems, Inc. (EBS) supplies high quality well supplies with free shipping anywhere in the continental U.S. NOTE: Sales tax will be added to all California orders.
- Prices are subject to change without notice. Questions: contact Jim Jacobs, President at (415) 381-5195.
- Payment Terms: Checks: Net 30 days; Visa and MasterCard also accepted.

